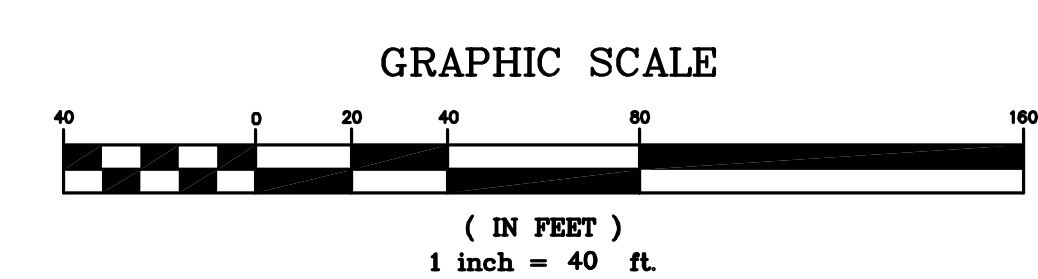
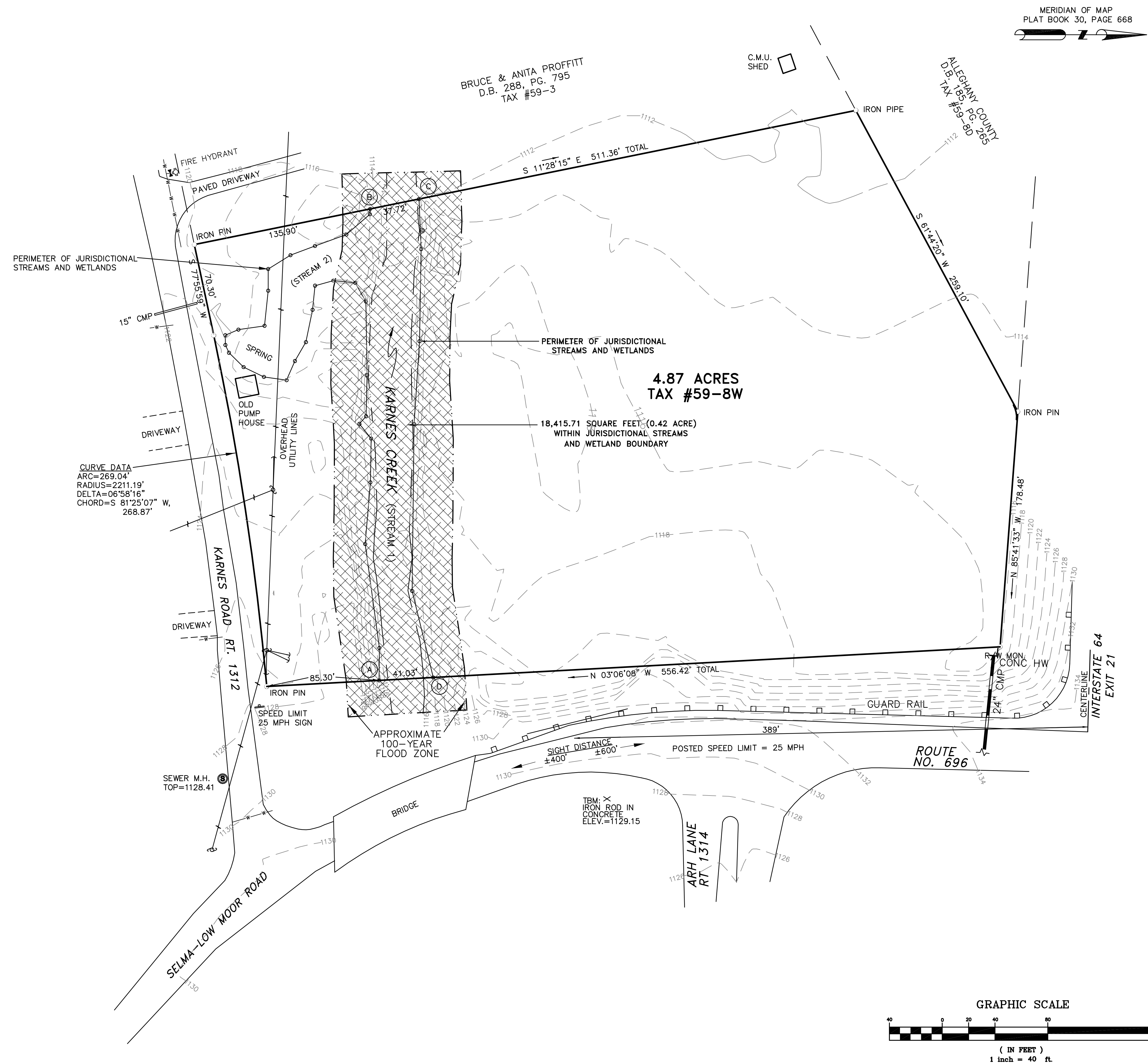


JURISDICTIONAL STREAM AND WETLAND BOUNDARY FROM POINT "A" TO POINT "B"

LINE	BEARING	DISTANCE
L1	N 89°35'59" W	24.57'
L2	S 82°14'08" W	79.45'
L3	N 85°08'02" W	46.86'
L4	N 89°06'09" W	33.17'
L5	S 51°20'05" W	14.30'
L6	N 48°19'36" W	7.62'
L7	N 88°23'52" W	31.18'
L8	S 89°00'34" W	55.78'
L9	S 60°12'31" W	16.31'
L10	S 05°37'58" W	16.61'
L11	S 15°18'19" E	14.41'
L12	S 84°11'00" E	18.37'
L13	S 78°22'11" E	24.99'
L14	S 59°45'37" E	16.54'
L15	S 66°24'10" E	15.83'
L16	S 08°08'36" W	17.34'
L17	S 25°51'03" W	17.09'
L18	S 44°22'11" W	15.53'
L19	S 65°19'59" W	6.44'
L20	S 89°32'32" W	7.44'
L21	N 22°57'26" W	10.77'
L22	N 08°16'11" W	20.00'
L23	N 84°05'09" W	26.77'
L24	N 89°58'14" W	16.41'
L25	N 31°46'48" W	19.87'
L26	N 20°33'21" W	19.80'
L27	N 19°57'05" W	25.32'
L28	N 40°50'34" W	23.56'
L29	N 87°12'56" W	4.00'

JURISDICTIONAL STREAM AND WETLAND BOUNDARY FROM POINT "C" TO POINT "D"

LINE	BEARING	DISTANCE
L1	N 87°34'05" E	37.98'
L2	S 89°00'18" E	69.72'
L3	S 86°20'02" E	62.97'
L4	S 89°19'29" E	126.31'
L5	N 76°19'56" E	67.41'



**ACS DESIGN**  
 ENGINEERING • SURVEYING  
 LANDSCAPE ARCHITECTURE  
 CONSTRUCTION MANAGEMENT

2203 PETERS CREEK ROAD  
 ROANOKE, VIRGINIA 24017  
 P 540.562.2345 F 562.2344  
 INFO@ACSDSIGNLLC.COM  
 WWW.ACSDSIGNLLC.COM

**GRADING & EROSION CONTROL PLAN  
 FOR TAX MAP NO. 59-8W  
 ALLEGHANY COUNTY, VIRGINIA**

© ACS DESIGN, LLC - Material included herein is covered by copyright. Use of this work in whole or in part is strictly forbidden without the expressed written consent of ACS DESIGN, LLC.

DRAWN BY:	SFE
DESIGNED BY:	SFE
CHECKED BY:	SFE
DATE:	10 JUL 2010
JOB NUMBER:	09160

REVISIONS:	
No. 1	13 DEC 2010
Alleghany County Comments 11/28/10	
No. 2	13 DEC 2010
VDOT Comments #1	
No. 3	15 DEC 2010
A.C. & VDOT Comments #2	
No. 4	

SHEET NO.:  
**C1.1**  
 EXISTING  
 CONDITIONS